

Analysis Report

Prepared For: _____

Prepared By: _____

Analytical method

Mobile Phase A: 0.1% Formic Acid in Water

Mobile Phase B: 0.1% Formic Acid in Acetonitrile

Testing Site and Date

Testing Site: _____ Testing Date: 09/09/14

Analyte

Name: Trenbolone Acetate (TRA)

Condition while received: Well

Storage Condition after received: Room Temperature

There was no discrepancy when sample received.

Analytical Instrument

Equipment: High-Performance Liquid Chromatography with Mass Spectrometric
(MS/MS) Detection

ID Number: HPLC-024/MSMS-016

Software: MassLynx v.4.1

Result (original mass-spectrogram see attachment):

The sample has same Mass Transition with the standard.

The compound in sample is Trenbolone Acetate.

Assay Percent%: 97.5

Analyst: _____

Date: 09/12/14

Auditor: _____

Date: 09/12/14

Trenbolone Acetate (TRA)
Molecular weight: 312.4

HPLC-024 Condition

Solvent A: 0.1% Formic Acid in Water

Solvent B: 0.1% Formic Acid in Acetonitrile

Mobile Phase: Solvent A:Solvent B (5:95, v/v)

Flow Rate (mL/min): 0.300

MSMS-016 Condition:

Cone (V)	21
Collision (eV)	20
Dwell Time (secs)	0.3
Delay Time (secs)	0.02
Ionization Mode	ES+
Source Temperature (°C)	130
Desolvation Temperature (°C)	350
Cone Gas (L/hr)	80
Desolvation Gas (L/hr)	732
Capillary (kV)	0.5
Hex 1 (V)	20
Aperture (V)	0.5
Hex 2 (V)	0.0
LM/HM Resolution 1	12.0
Ion Energy 1 (V)	1.0
LM/HM Resolution 2	12.0
Ion Energy 2 (V)	2.0
Entrance	1.0
Exit	1.0
Multiplier (V)	650

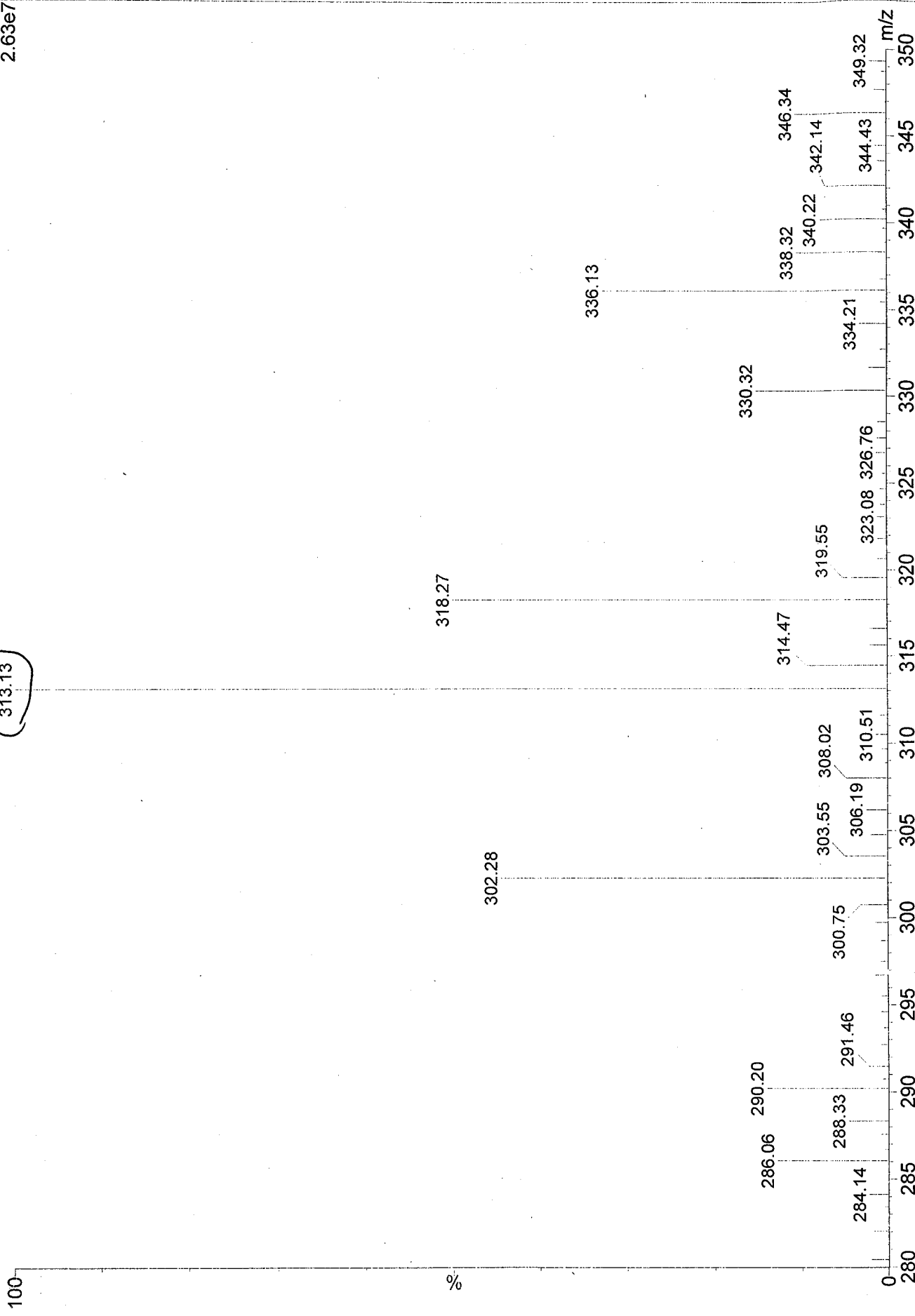
	Standard	Sample
Mass Transition	313.19>253.09	313.13>253.09

TRA sample analysis

090914-TRA-01 1 (0.042) Cm (1:15)

Scan ES+
2.63e7

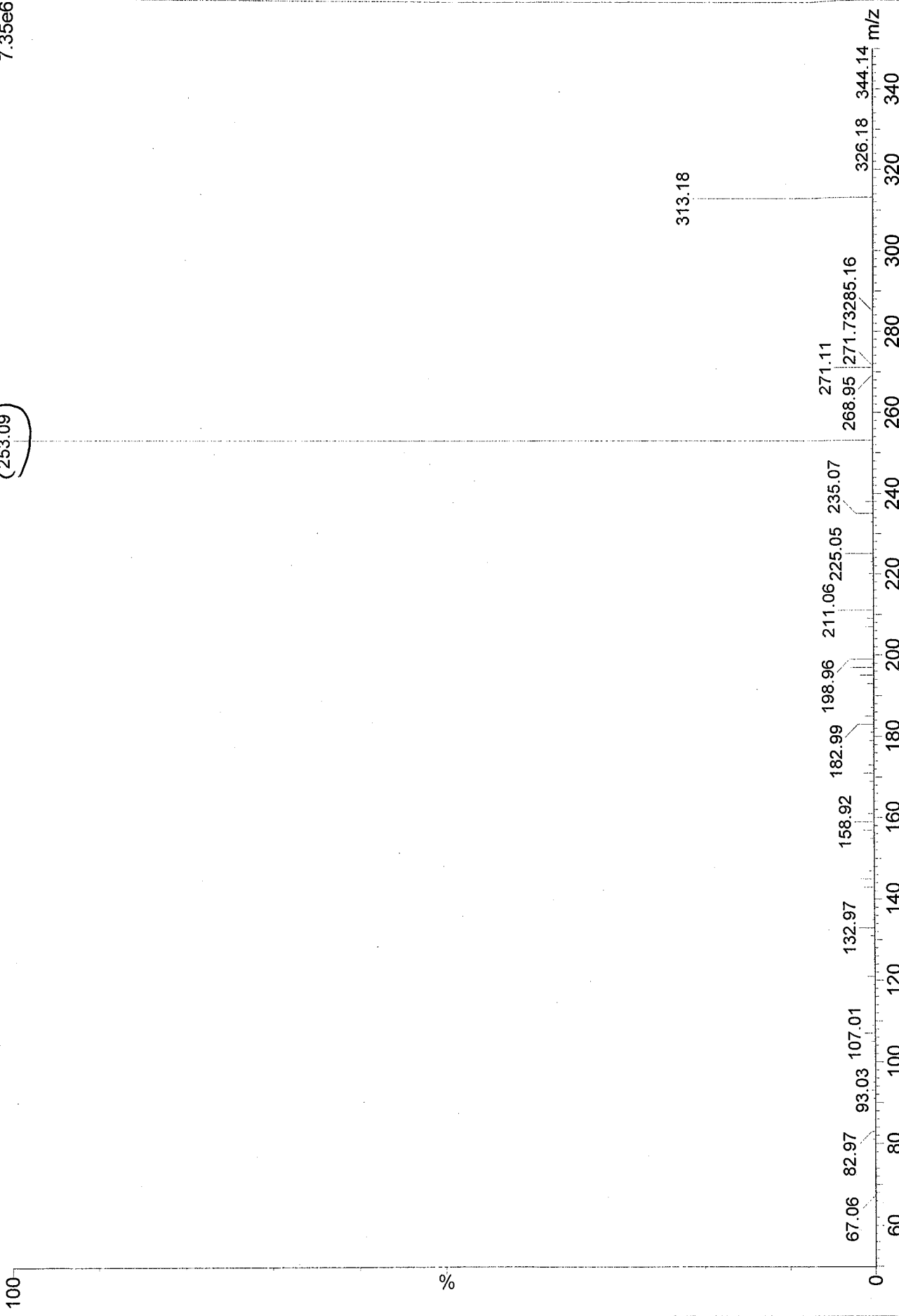
313.13



TRA sample analysis

090914-TRA-02 1 (0.042) Cm (1:15)

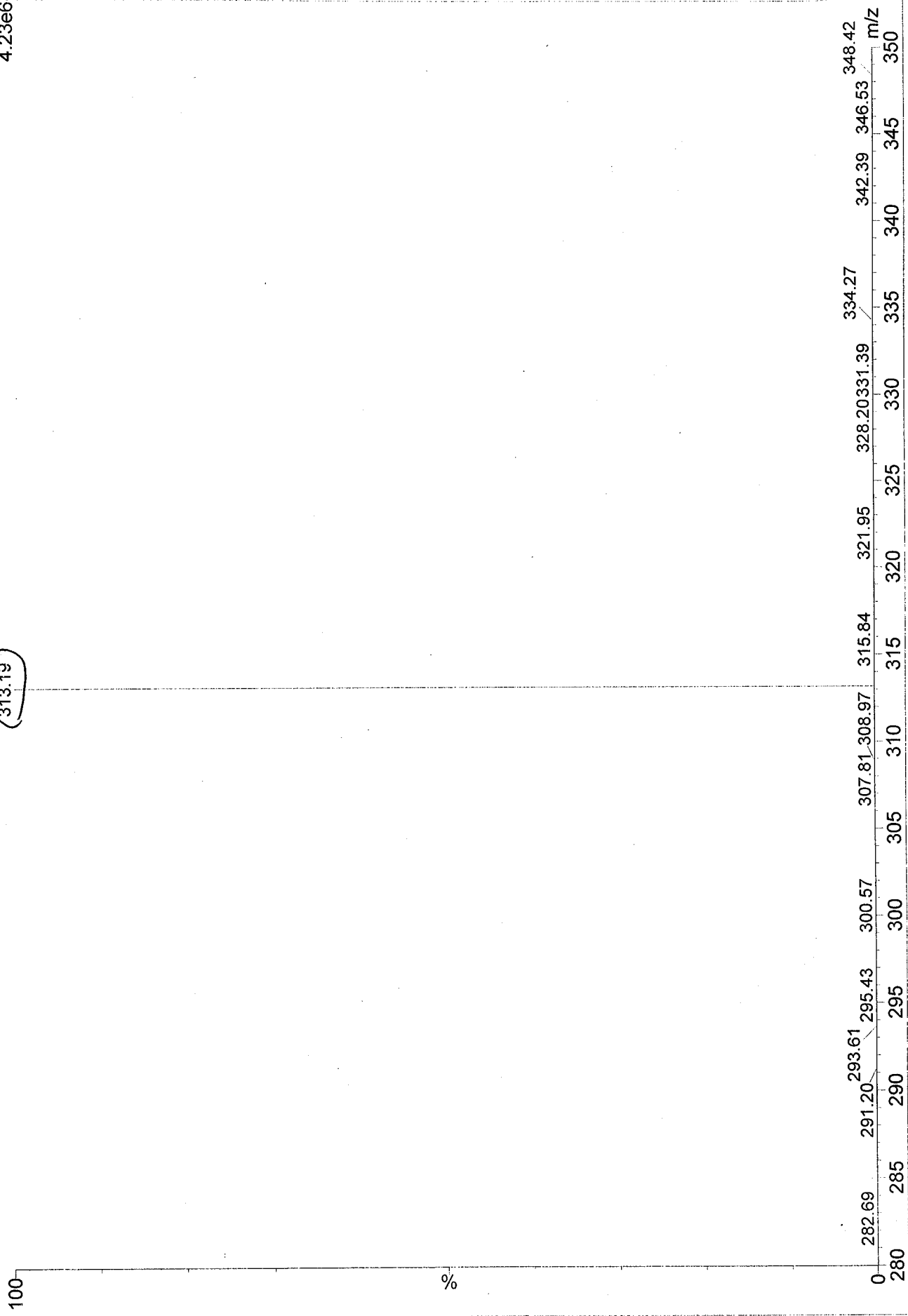
Daughters of 313ES+
7.35e6



TRA standard sample analysis
090914-TRA-03 4 (0.144) Cm (1:15)

Scan EST
Daughters of 313ES+
4.23e6

313.19



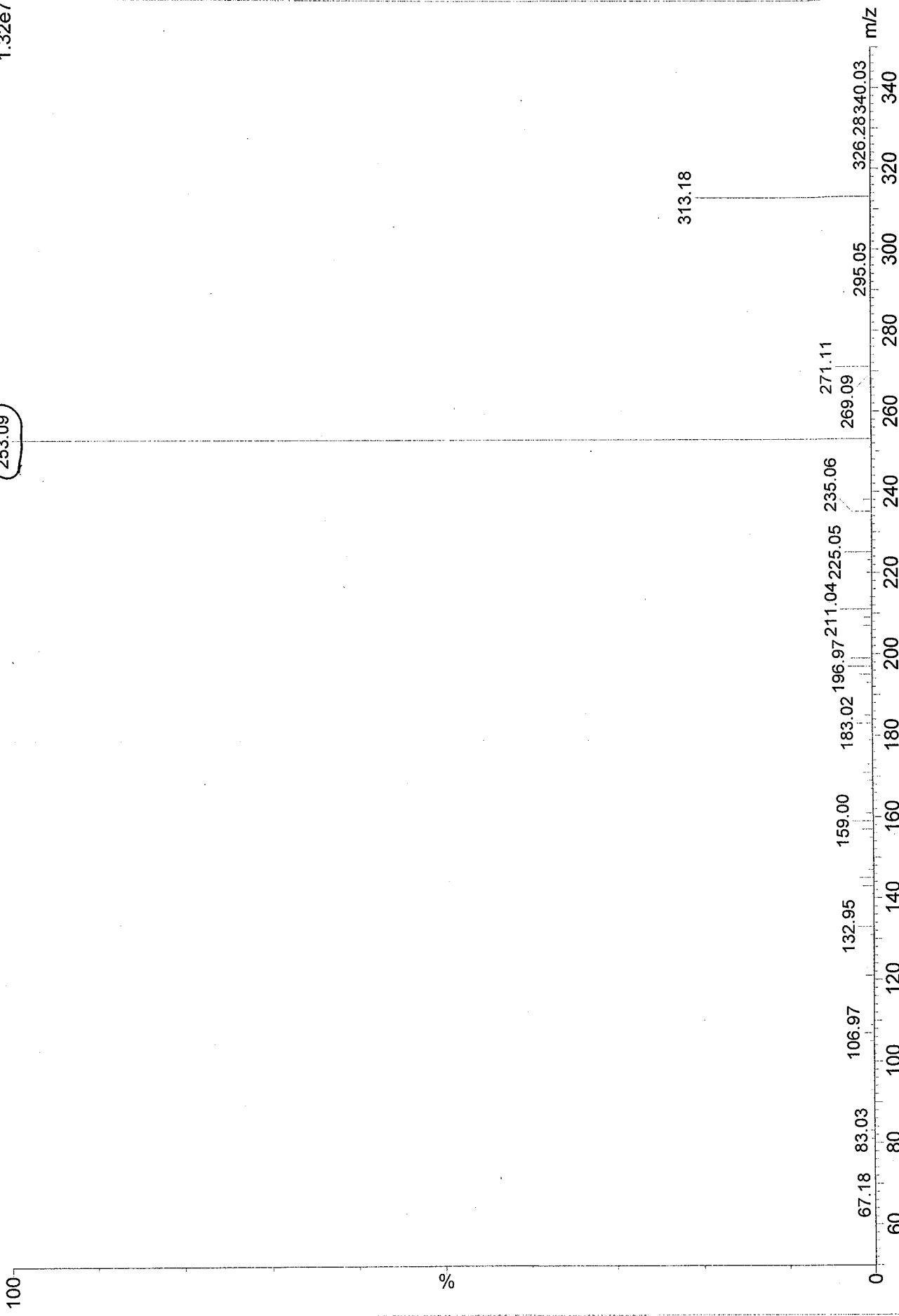
① correction. ZH . 09/11/14

TRA standard sample analysis
090914-TRA-04 12 (0.416) Cm (1:15)

Daughters of 313ES+
1.32e7

253.09

313.18



Dataset:
Signature: At Thursday, September 11, 2014 14:40:21 China Standard Time
By
Reason processing data
Printed: At Thursday, September 11, 2014 14:54:41 China Standard Time
By

Method: 09 Sep 2014 16:07:35
Calibration: 11 Sep 2014 14:39:08

Compound name: TRACorrelation coefficient: $r = 0.999734$, $r^2 = 0.999468$ Calibration curve: $897.116 * x + 690.933$

Response type: External Std, Area

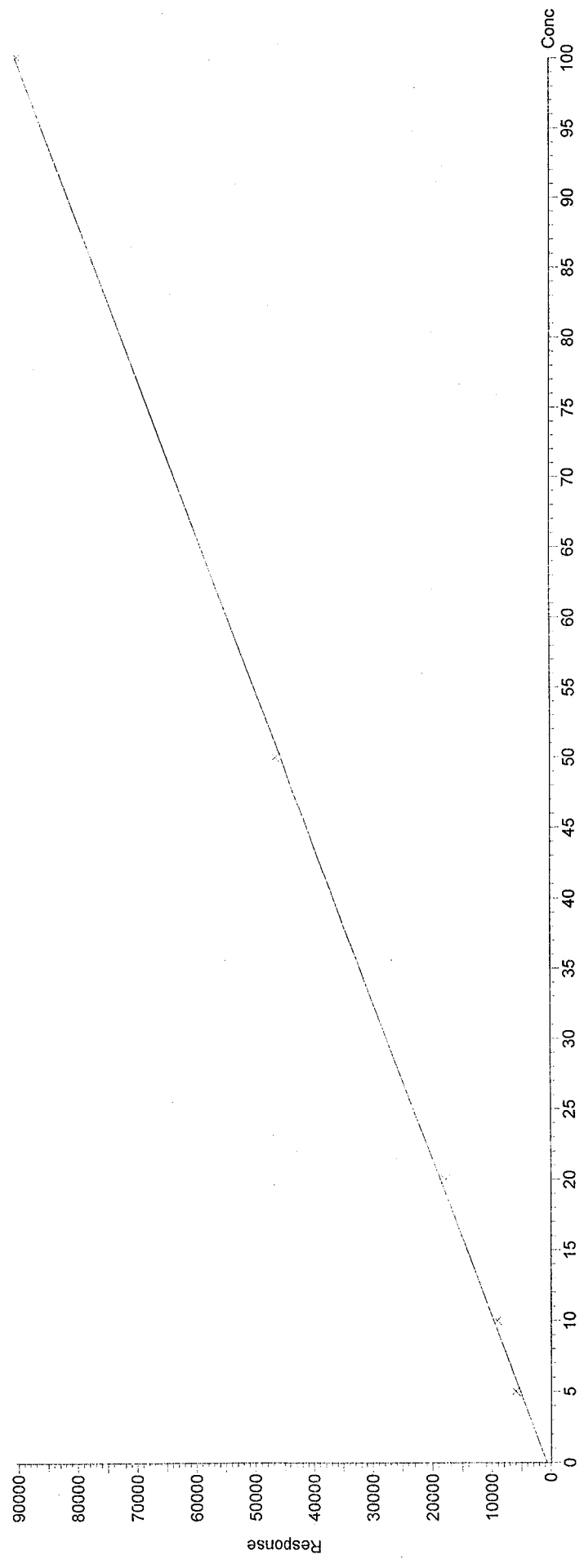
Curve type: Linear, Origin: Exclude, Weighting: Null, Axis trans: None

#	Sample Text	ID	Type	Area	IS Area	Conc.	%Dev.	Dil.	Flags	RT	Response
1	TRA 5 ng/mL	TRA	Standard	5911	0	5.82	16.4	1.0	bb	2.21	5911
2	TRA 10 ng/mL	TRA	Standard	9093	0	9.37	-6.35	1.0	bb	2.21	9093
3	TRA 20 ng/mL	TRA	Standard	17785	0	19.1	-4.73	1.0	bb	2.21	17790
4	TRA 50 ng/mL	TRA	Standard	46533	0	51.1	2.20	1.0	bb	2.21	46530
5	TRA 100 ng/mL	TRA	Standard	90099	0	99.7	-0.338	1.0	bb	2.21	90100
6	TRA	TRA	Analyte	18120	0	19.4		1.0	bb	2.21	18120
7	TRA	TRA1	Analyte	17994	0	19.3		1.0	bb	2.21	17990
8	TRA	TRA2	Analyte	18354	0	19.7		1.0	bb	2.21	18350

Dataset: [redacted]
Signature: At Thursday, September 11, 2014 14:40:21 China Standard Time
By [redacted]
Reason processing data
Printed: At Thursday, September 11, 2014 14:54:55 China Standard Time
By [redacted]

Method: [redacted] 09 Sep 2014 16:07:35
Calibration: 11 Sep 2014 14:39:08

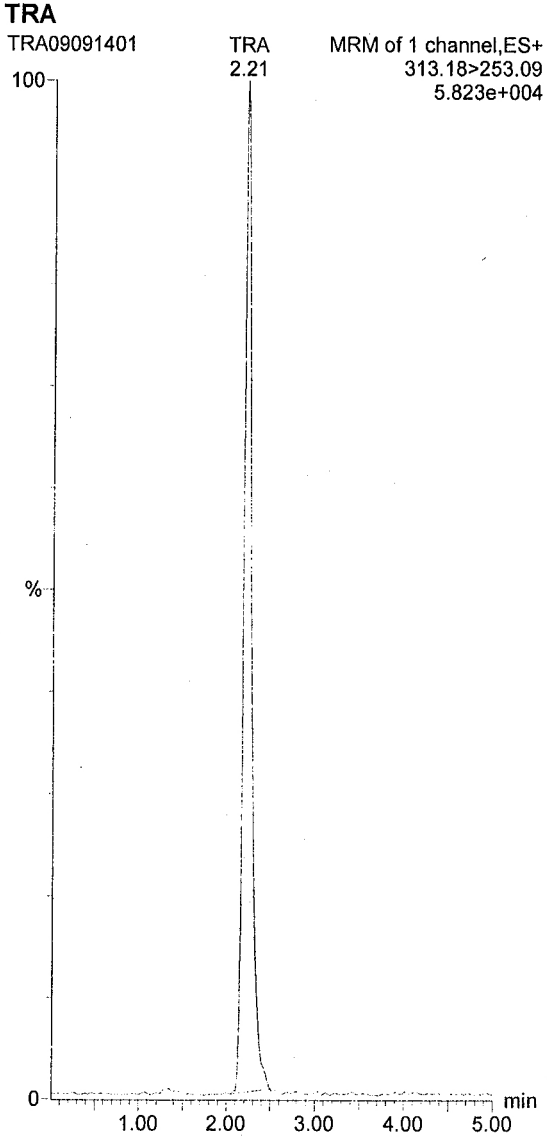
Compound name: TRA
Correlation coefficient: $r = 0.999734$, $r^2 = 0.999468$
Calibration curve: $897.116 * x + 690.933$
Response type: External Std, Area
Curve type: Linear, Origin: Exclude, Weighting: Null, Axis trans: None



Dataset:
Signature: At Thursday, September 11, 2014 14:40:21 China Standard Time
By
Reason processing data
Printed: At Thursday, September 11, 2014 14:55:18 China Standard Time
By

Method: 09 Sep 2014 16:07:35
Calibration: 11 Sep 2014 14:39:08

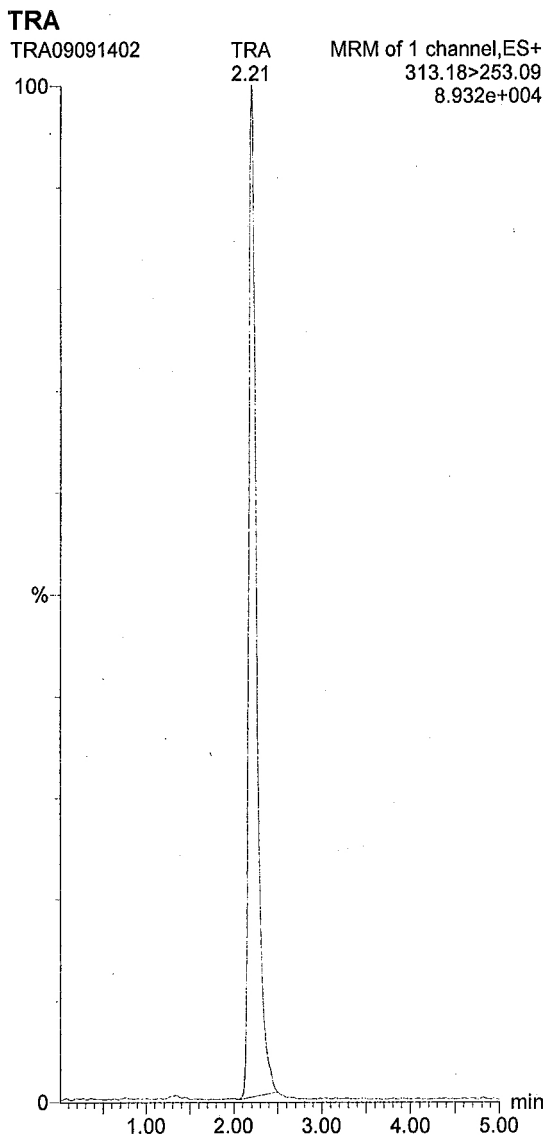
Name: TRA09091401, Date: 10-Sep-2014, Time: 12:43:32, ID: TRA, Description: TRA 5 ng/mL



#	Name	Area	Conc.	RT	Flags
1	TRA	5911	5.82	2.21	bb

Dataset:
Signature: At Thursday, September 11, 2014 14:40:21 China Standard Time
By
Reason processing data
Printed: At Thursday, September 11, 2014 14:55:18 China Standard Time
By

Name: TRA09091402, Date: 10-Sep-2014, Time: 12:49:14, ID: TRA, Description: TRA 10 ng/mL



#	Name	Area	Conc.	RT	Flags
1	TRA	9093	9.37	2.21	bb

Dataset:

Signature: At Thursday, September 11, 2014 14:40:21 China Standard Time

By

Reason processing data

Printed: At Thursday, September 11, 2014 14:55:18 China Standard Time

By

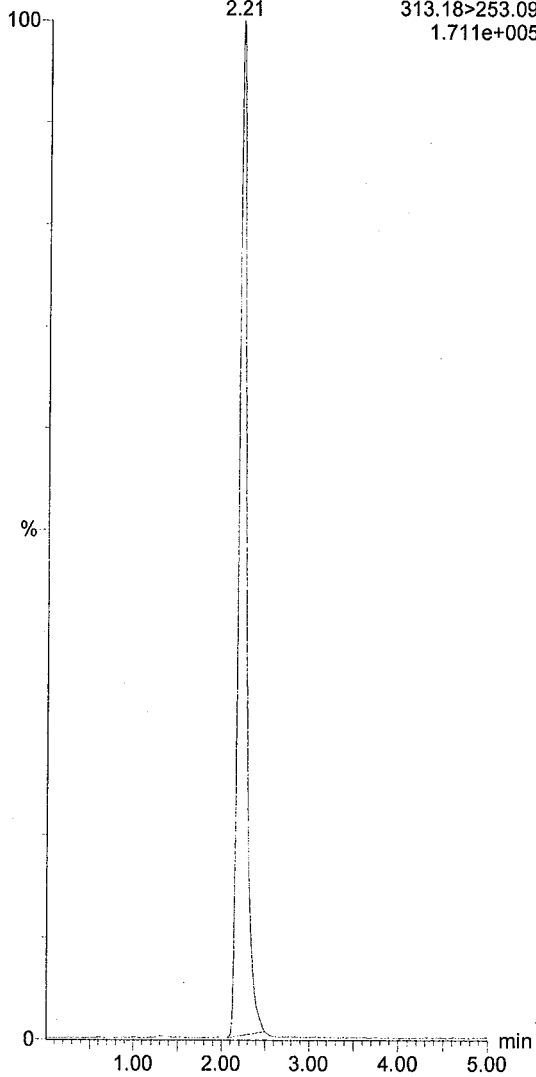
Name: TRA09091403, Date: 10-Sep-2014, Time: 12:54:29, ID: TRA, Description: TRA 20 ng/mL

TRA

TRA09091403

TRA
2.21

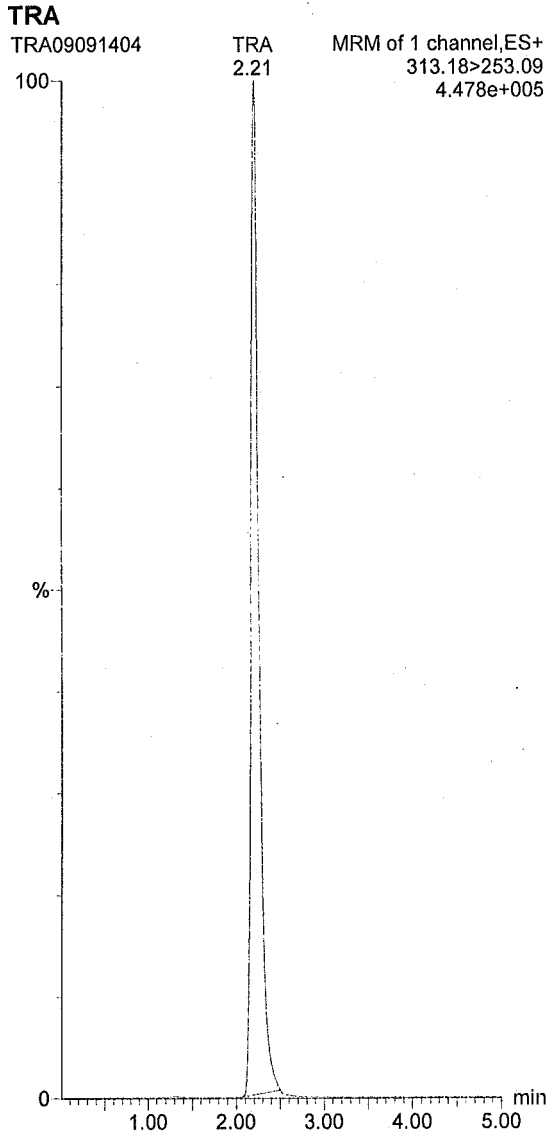
MRM of 1 channel, ES+
313.18>253.09
1.711e+005



#	Name	Area	Conc.	RT	Flags
1	TRA	17785	19.1	2.21	bb

Dataset:
Signature: At Thursday, September 11, 2014 14:40:21 China Standard Time
By
Reason processing data
Printed: At Thursday, September 11, 2014 14:55:18 China Standard Time
By

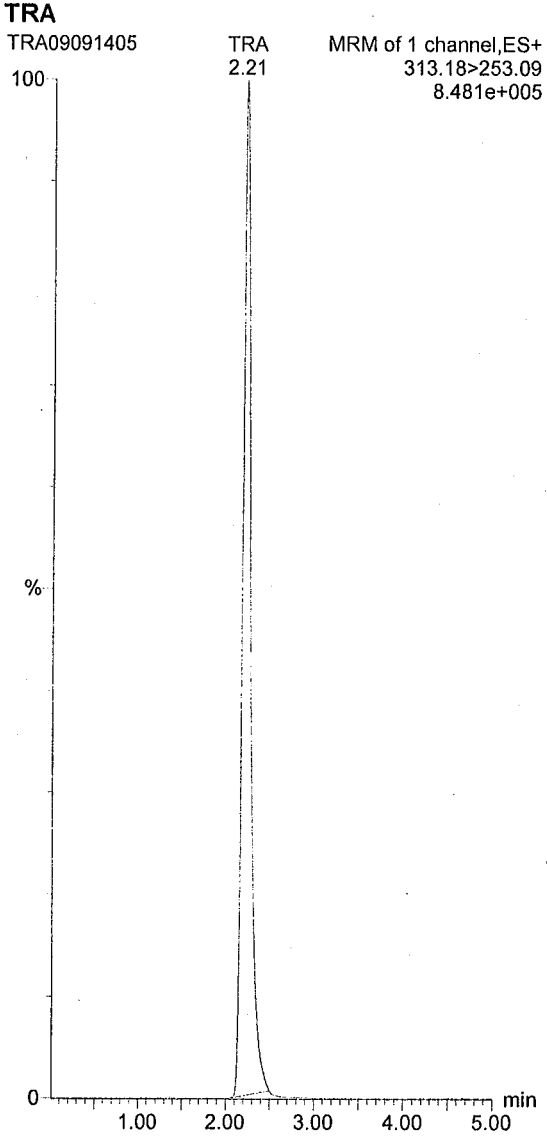
Name: TRA09091404, Date: 10-Sep-2014, Time: 12:59:45, ID: TRA, Description: TRA 50 ng/mL



#	Name	Area	Conc.	RT	Flags
1	TRA	46533	51.1	2.21	bb

Dataset:
Signature: At Thursday, September 11, 2014 14:40:21 China Standard Time
By
Reason processing data
Printed: At Thursday, September 11, 2014 14:55:18 China Standard Time
By

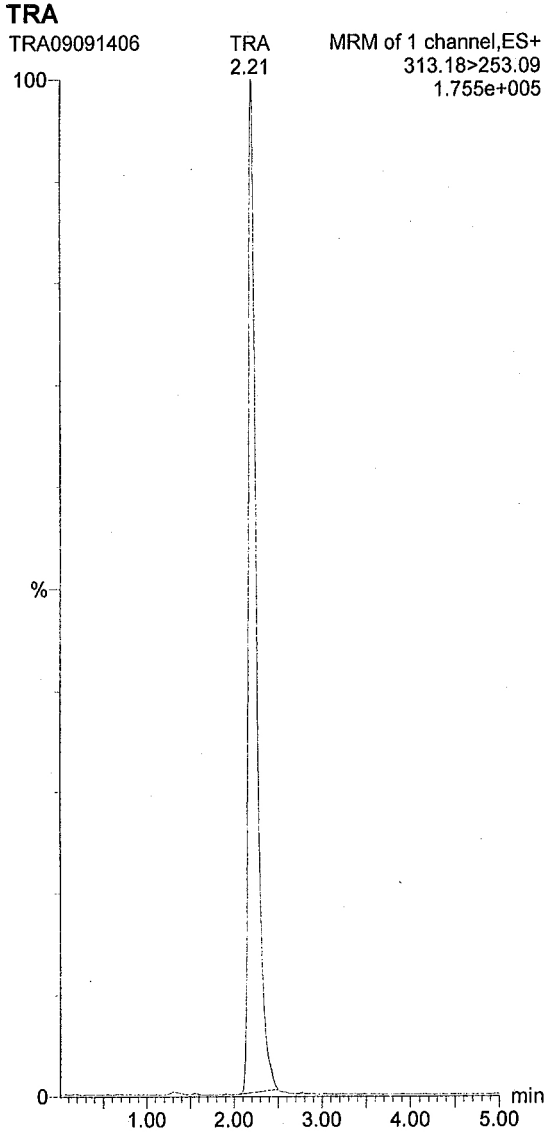
Name: TRA09091405, Date: 10-Sep-2014, Time: 13:05:01, ID: TRA, Description: TRA 100 ng/mL



#	Name	Area	Conc.	RT	Flags
1	TRA	90099	99.7	2.21	bb

Dataset:
Signature: At Thursday, September 11, 2014 14:40:21 China Standard Time
By
Reason processing data
Printed: At Thursday, September 11, 2014 14:55:18 China Standard Time
By

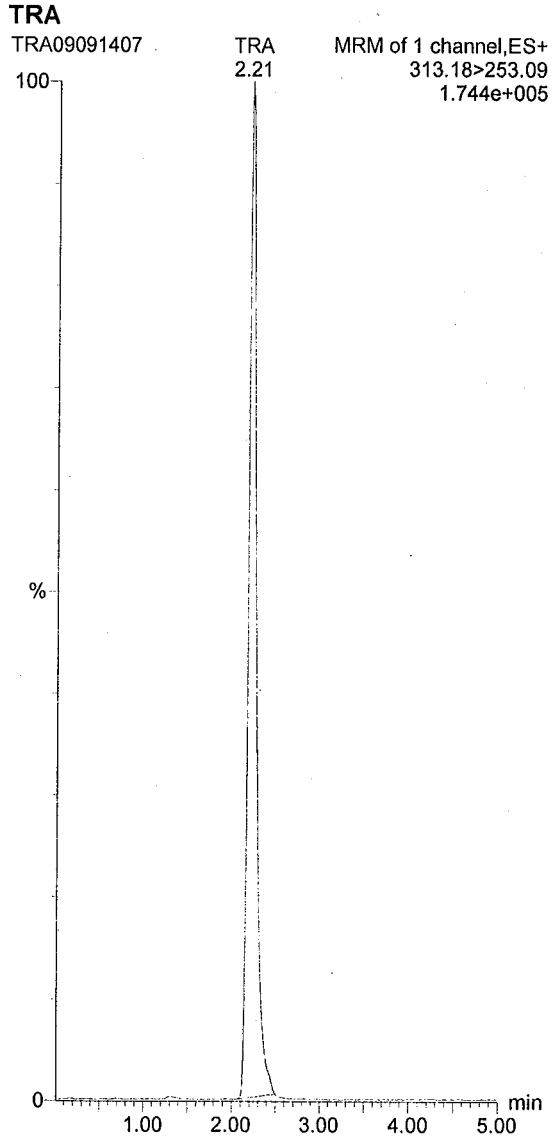
Name: TRA09091406, Date: 10-Sep-2014, Time: 13:10:16, ID: TRA, Description: TRA



#	Name	Area	Conc.	RT	Flags
1	TRA	18120	19.4	2.21	bb

Dataset:
Signature: At Thursday, September 11, 2014 14:40:21 China Standard Time
By
Reason processing data
Printed: At Thursday, September 11, 2014 14:55:18 China Standard Time
By

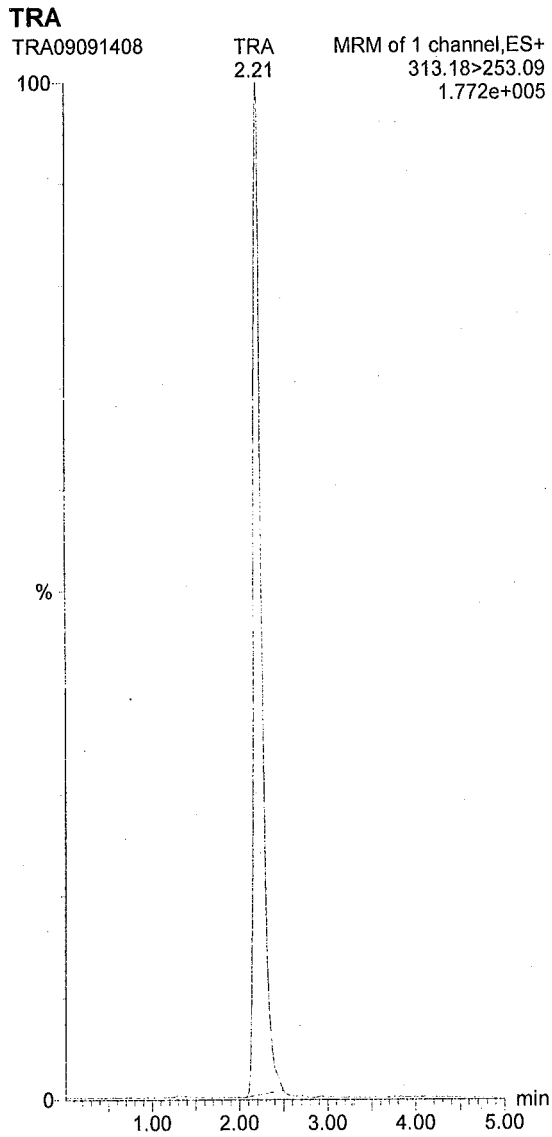
Name: TRA09091407, Date: 10-Sep-2014, Time: 13:15:32, ID: TRA1, Description: TRA



#	Name	Area	Conc.	RT	Flags
1	TRA	17994	19.3	2.21	bb

Dataset:
Signature: At Thursday, September 11, 2014 14:40:21 China Standard Time
By
Reason processing data
Printed: At Thursday, September 11, 2014 14:55:18 China Standard Time
By

Name: TRA09091408, Date: 10-Sep-2014, Time: 13:20:48, ID: TRA2, Description: TRA



#	Name	Area	Conc.	RT	Flags
1	TRA	18354	19.7	2.21	bb

AR46 Trenbolone Acetate (TRA)

HPLC Condition

Solvent A: 0.1% Formic Acid in Water

Solvent B: 0.1% Formic Acid in Acetonitrile

Mobile Phase: Solvent A:Solvent B (5:95, v/v)

Flow Rate (mL/min): 0.3

Column: Waters Atlantis dC18, 150 × 2.1 mm, 5 µm, Column

	Calculated Conc.(ng/mL)	Mean Actual Conc.(ng/mL)	Theoretical Conc.((ng/mL)	Assay Percent %
S1-1	19.4	19.5	20.0	97.5
S1-2	19.3			
S1-3	19.7			